

# ALIGN<sup>®</sup>

radial head system  
by skeletal dynamics

---

The only radial head  
that can be ALIGNed  
to the patient's axis  
of forearm rotation...



- 
- + Long Stem for Solid Fixation
  - + Side Loading Head Design
  - + Precise Anatomic Alignment
-

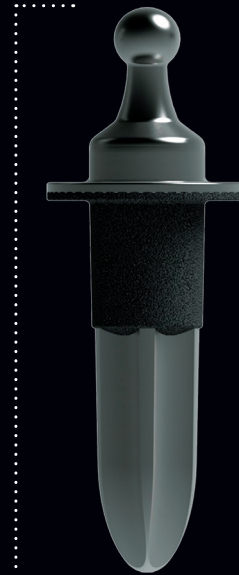
# ALIGN<sup>®</sup>

## radial head system

by skeletal dynamics

### Radial Head

- + 5 Head diameters 18mm-26mm
- + Side loading head
- + Patented internal threads resist loosening of the Lock Screw
- + Tapered cutting splines engage and lock the ball
- + Atraumatic dish minimize capitellar wear



### Radial Stem

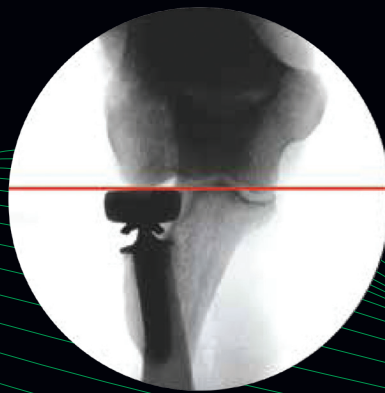
- + 5 neck offsets 0mm-8mm
- + 5 stem diameters 7mm-11mm
- + Distal stem flutes for rotational stability
- + Ti plasma spray

### Anatomically Designed

- + Long stem design provides three point fixation for a solid press fit



SUPINATION



PRONATION