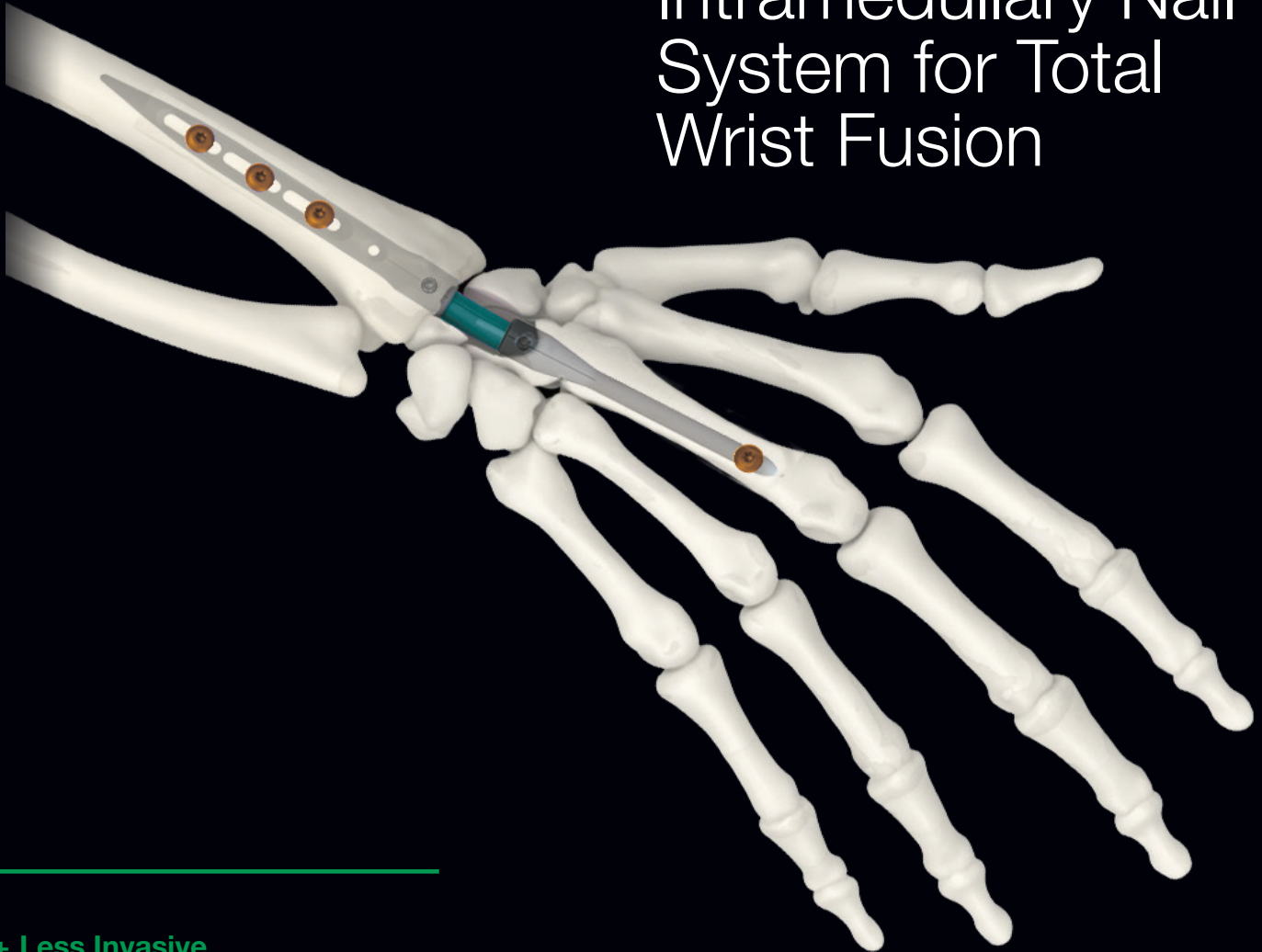


IMPLATE[®]

wrist arthrodesis nail

by skeletal dynamics

The First Intramedullary Nail System for Total Wrist Fusion

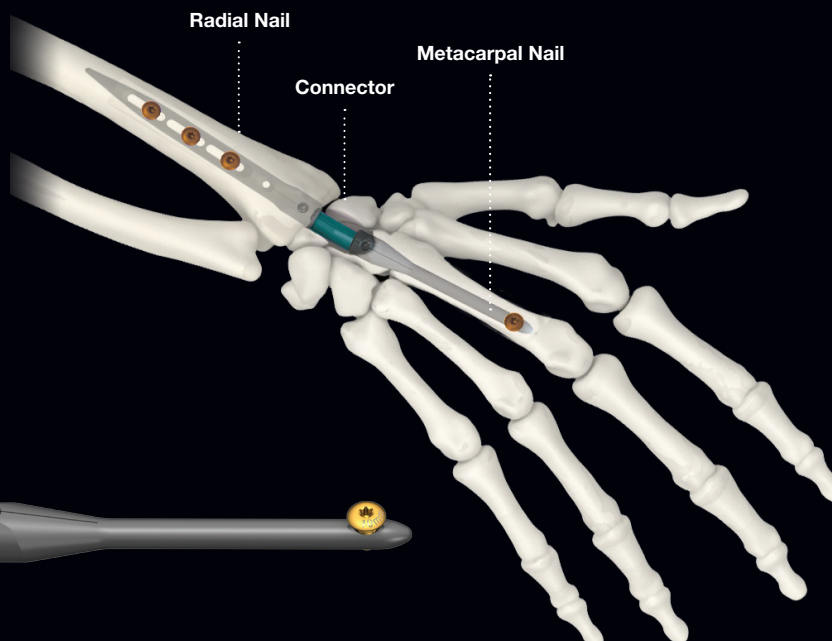


- + Less Invasive
- + Strong and Stable Construct
- + Precise Anatomic Alignment

IMPLATE[®]

wrist arthrodesis nail

by skeletal dynamics

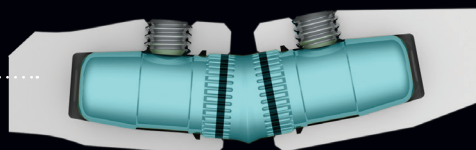
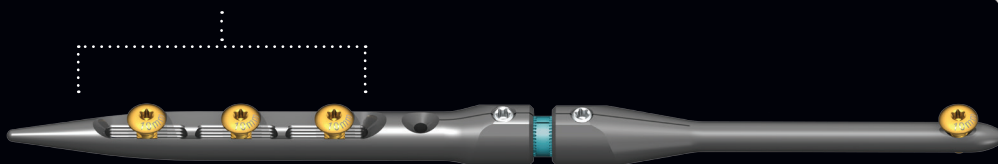


Uncortical Locking Screws

+ for nail stability

Threaded Slots

+ Provide up to 8mm of translation for compression

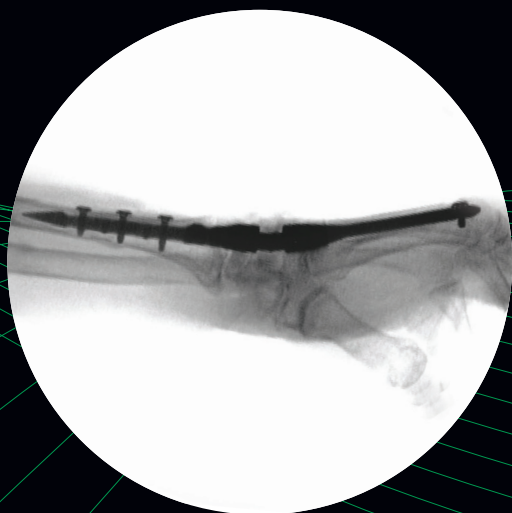


MicroSplines

+ Allow for rotational adjustments
+ Provide construct stability

Positional Adjustments

+ Rotation
+ Flexion-Extension
+ Radio-Ulnar Deviation



STRONG AND STABLE CONSTRUCT

